

FLUVAL[®]

THE NEW 05 SERIES



405

305

205

105

THE FLUVAL 05 SERIES ADVANCES FILTRATION TO THE NEXT LEVEL

> Evolution through innovation combines with the intelligent application of technology to produce a first-in-class series of external canister filters. The Fluval 05 series is the filtration system of choice for discerning aquarists who want to achieve maximum versatility and premium performance to create aquatic masterpieces.

Fluval 05 filters represent the exciting newly refined generation of external filtration technology. Tried and tested by novice and experienced hobbyists alike, Fluval 05 Series offers easy-to-use, accurate, powerful filtration in four sizes to suit all types of aquariums, whether small, simple, large or sophisticated.

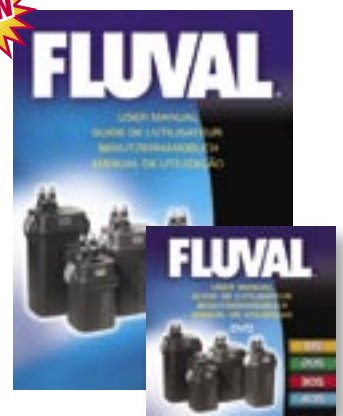
Three decades of Italian design, technology and workmanship have combined to produce the current day innovations found in this premium series of external canister filters. The 05 Series continues to incorporate powerful, high output motors for maximum flow rates and efficiency, and now includes new features that make these filters even more reliable, adaptable and easy to use.

EASIER THAN EVER TO INSTALL AND START UP!

The **new 05 Series** incorporates user-friendly elements to help facilitate and speed up filter set up. Now, when you want to know how difficult the filter is to set up and maintain, the answer is: **it's simple.**

> INSTRUCTIONAL DVD & GUIDE

Eliminate the guesswork. The Fluval User Manual DVD walks you through installation, maintenance and filter media considerations in a clear, easy-to-follow manner. This DVD works hand-in-hand with a convenient Quick-Start Guide and a User Manual Book that has simple directives and clear images to guide you through the various steps, while providing the information you require to successfully use the product and maximize its effectiveness.



> PRE-ASSEMBLED PARTS

No more sitting around trying to figure out which piece goes where. The assorted parts come pre-assembled on a card so that you can clearly identify the components. The Intake Strainer is already pre-affixed to the Intake Tube, and both the Intake Tube and Output Nozzle have Rubber Hose Adapters on them - just cut the hosing, attach, and it's ready to go!



State-of-the-Art-Technology

> REINFORCED CANISTER



For increased strength, durability and ultimate quality, glass fibers have been incorporated into the filter canister housing.



Glass Fibers



> REINFORCED LIFT-LOCK CLAMPS



Clamps are now reinforced with glass fibers for maximum strength and durability. CAM-action technology facilitates opening and closing for ease of maintenance and accessibility, and to securely lock motor housing in place.



> RIM CONNECTOR ASSEMBLY



Easy-to-use rim connector assembly slides onto and snaps together instantly for extra-quick set-up. The sleek, new connector system can be relied on to hold the intake and output hosing securely in place without being awkward or bulky.



> INTAKE STRAINER



Promotes the capture of large debris in an innovative way that prevents clogging, reduces maintenance and helps ensure that filter operation is rarely impeded. The new design is also safer for fish. With a larger diameter and extended ribs, the water flow around the strainer is slower, preventing fish from being sucked onto the strainer.



> AQUASTOP™ VALVE

Fluval's proprietary AquaStop™ valve creates an airtight and watertight seal so that hosing can be disconnected without breaking the vacuum. This means that the system can be started up again without the need for priming after routine maintenance, offering unparalleled convenience and ease of use. The AquaStop™ lever can also be used to reduce water flow without harming the motor or its components.



> SELF-PRIMING INSTANT-START SYSTEM

For convenient, simple and quick filter start-up. No need for manual siphoning.



MOTOR TECHNOLOGY THE POWER BEHIND THE TECHNOLOGY



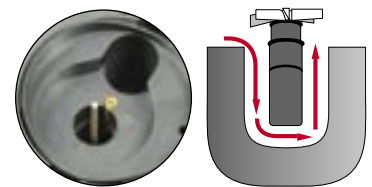
High output motor is sealed in epoxy that resists high temperature for performance and safety. Larger electromagnetic coils provide increased power resulting in improved priming and speedy air evacuation.



Precision engineered and balanced impeller assembly for quiet operation. Durable ceramic impeller shaft extends product life.



Thermoplastic elastomer-coated impeller cover dampens impeller vibrations to provide near-silent filter operation.



Self-flushing impeller well helps keep impeller cool and free of debris for less maintenance.

THE COMPLETE FLUVAL MEDIA

> The true power behind Fluval filtration technology



Multiple modules allow a vast array of filter media options for maximum versatility. This unparalleled level of flexibility permits the combination of up to eight unique media custom configurations to suit the desired filtration objectives of any aquarium. To save time and eliminate guesswork, filtration media is supplied already packed into the filter baskets in a combination of layers recommended for most basic aquariums. The media baskets are self-contained and interchangeable so media can be rinsed or replaced in one basket without having to change the whole stack.

The mechanical stage features large vertical twin foam pre-filters to prevent clogging of chemical and biological filter media. The chemical and biological stages are housed in independent modules. All filter media can be changed independently to ensure a consistent level of beneficial nitrifying bacteria. Alternate configurations or different media types can be used to create the specific conditions needed for any species of fish, invertebrates or aquatic plants.



1 Fluval Foam

- The crucial first stage of filtration
- Captures large particles for effective mechanical filtration
- Large surface area allows efficient water flow with less clogging
- Enhances biological filtration
- For all Fluval filters

Art. # A-220 104/105, 2pcs
 Art. # A-222 204-304/205-305, 2 pcs
 Art. # A-226 404/405, 2 pcs



2 Fluval Pre-Filter

- Chemically inert ceramic rings
- Designed to trap larger particles before they reach finer media
- Extends the periods between cleaning and prevents clogging of other filter media
- For fresh and saltwater

Art. # A-1470, 750g



3 Fluval Carbon

- Improves water clarity
- Removes odors, heavy metals, discolorations, contaminations and pollutants
- Leaves water crystal clear and sparkling
- For fresh and saltwater

Art. # A-1440, 300g (3 x 100g)
 Art. # A-1445, 375g
 Art. # A-1447, 900g
 Art. # A-1448, 1650g





3 Fluval Ammonia Remover

- Removes toxic ammonia as water comes into contact with it
- Natural ion-exchange media
- Controlling ammonia levels reduces stress on fish
- For freshwater use only

Art. # A-1480, 540g (3 x 180g)
 Art. # A-1486, 1600g
 Art. # A-1487, 2800g



3 Fluval Zeo-Carb

- Premium blend of Fluval Carbon & Ammonia Remover
- Eliminates liquified impurities, odors & discoloration
- Removes toxic ammonia
- Two products in one - ideal when filter space is limited
- For freshwater use only

Art. # A-1490, 450g (3 x 150g)
 Art. # A-1492, 1200g
 Art. # A-1493, 2100g



Formerly **GREEN-X**

4,5,6,7

Fluval ClearMax

- Traps phosphate, nitrite and nitrate
- Provides crystal clear water and creates ideal conditions for fish and plants
- For fresh and saltwater

Art. # A-1348, 300g (3 x 100g)

4,5,6,7



Phosphate Remover

Super absorbent, fast-acting phosphate remover

Art. # A-1500, 150g

4,5,6,7



Nitrate Remover

Fast-acting science grade ion exchange resin

Art. # A-1502, 150g

4,5,6,7



Opti-Carb

Removes toxins, metals and proteins

Art. # A-1504, 175g



8 Fluval Polishing Pads

- For crystal clear water
- Quickly clears water clouded by suspended particles
- Uniquely shaped to fit Fluval filters
- For temporary use in all Fluval filters

Art. # A-242, 3pcs
 Art. # A-244, 6pcs



9 Fluval BioMax

- Biological filtration media, highly porous with huge surface area to allow beneficial bacteria to thrive
- Helps reduce harmful ammonia and nitrite
- For fresh and saltwater

Art. # A-1456, 500g
 Art. # A-1457, 1100g

> FLUVAL MULTI-STAGE ADVANCED FILTRATION SYSTEM

Continuous water circulation is vital to replenish the aquarium's oxygen supply:

the faster a filter can completely process the entire volume of water in the tank, the cleaner and more highly oxygenated the water will be.



Fluval's signature square shaped canister provides between 35% and 55% more

volume than would be found in a typical round filter of the same dimensions, providing a larger filtration area for quicker cleaning. The entire canister volume is utilized for radically increased contact time optimizing filtration efficiency. To further increase contact with the filtration media, the water is directed into the complex flow paths inside the filter.



THE FLUVAL LAB SERIES



Originally developed with the serious aquarist in mind, these media are powerful combatants against dirty and unsafe aquarium conditions. Lab Series medias are also well suited to building a solid base of new hobbyists as more and more people will have greater success in keeping fish within healthier aquariums.

Developed at HARS (Hagen Aquatic Research Station), Fluval Lab Series premium grade medias incorporate some of the highest laboratory grade resins available. All three media types are manufactured within strict laboratory conditions and via a sophisticated chemical process, ensure optimum results.



Phosphate Remover

- Adsorbs phosphate, silicate and organic compounds
- Removes up to 20 mg/L (ppm) of phosphate per 50 U.S. gal. (189 L)
- Will not affect pH or Hardness
- For use in fresh and saltwater aquariums

Fluval Lab Series Phosphate Remover rapidly adsorbs large quantities of phosphate, silicate and dissolved organics without leaching adsorbed substances. Maintaining low levels of phosphate will result in cleaner, healthier aquarium water while allowing corals to efficiently absorb the calcium they require to grow and reproduce. Phosphate Remover contains Ferric Oxide, an iron-based phosphate binder that can be used as a permanent solution.



Nitrate Remover

- Removes up to 25 mg/L (ppm) of nitrate in a 50 U.S. gal. aquarium
- Eliminates toxic nitrite
- Safe for fish, plants and invertebrates
- Does not contain phosphates
- Will not affect pH or Hardness
- Resin can be recharged several times
- Only for use in freshwater aquariums

Fluval Lab Series Nitrate Remover is a high capacity, lab-grade Strong Base Anion Exchange (ion exchange) resin that effectively removes nitrate and eliminates toxic nitrite within a matter of hours, resulting in a healthy aquatic environment.



Opti-Carb

High Capacity Ion Exchange Media

- For use as a daily filter media or for removal of specific toxic metals and compounds.
- Absorbs organic compounds
- Keeps water clear, eliminates discoloration
- Controls odors
- Promotes aerobic nitrifying bacteria establishments
- Treats up to 189 L (50 US gal.)
- Does not affect pH, KH or General Hardness
- For fresh and saltwater aquariums

Opti-Carb's mixture of ion-exchange and synthetic organic removal resins combine with research grade carbon to create a powerful, adsorbent water polishing media. Opti-Carb offers superior, rapid reduction of dissolved organic matter, removal of proteins (before they break down into toxic compounds), and elimination of odors and discolorations that result in sparkling clear aquarium water.

THE FLUVAL 05 SERIES FAMILY



Fluval brand products provide leading edge European design and technology to discriminating hobbyists. The new Fluval 05 Series delivers technically advanced innovations, convenience, precision and capacity. It is the premier choice in external filtration, offering the latest in user-friendly features and technology, the utmost accuracy and ultimate power in filtration. With four sizes to choose from, Fluval 05's are the filters of choice to keep water cleaner and healthier and accomplish aquatic excellence.



A-201



A-206



A-211



A-216

FLUVAL

• TECHNICAL SPECS •

| MODEL | FLUVAL | 105 | 205 | 305 | 405 |
|---------------------------------|--------|---------------------------|---------------------------|----------------------------|----------------------------|
| AQUARIUM CAPACITY | | 100 L (25 U.S. gal.) | 200 L (40 U.S. gal.) | 300 L (70 U.S. gal.) | 400 L (100 U.S. gal.) |
| ¹ PUMP OUTPUT | | 480 L/h (125 U.S. gal./h) | 680 L/h (180 U.S. gal./h) | 1000 L/h (260 U.S. gal./h) | 1300 L/h (340 U.S. gal./h) |
| ² FILTER CIRCULATION | | 330 L/h (85 U.S. gal./h) | 420 L/h (110 U.S. gal./h) | 710 L/h (185 U.S. gal./h) | 850 L/h (225 U.S. gal./h) |
| ³ HEAD HEIGHT (MAX.) | | 1.35 m (4.4 ft) | 1.35 m (4.4 ft) | 1.6 m (5.2 ft) | 2.05 m (6.7 ft) |
| MEDIA CAPACITY | | 3.2 L | 4.6 L | 6.6 L | 8.5 L |
| WATTAGE | | 9 W | 9 W | 15 W | 21 W |

Note:

¹: Pump output rates were measured from the filter motor units only, with no hoses or connection to the filter case or other filters.

²: Flow rates were measured with intake and output hoses of the same length.

³: The maximum height at which the unit will continue to pump.

